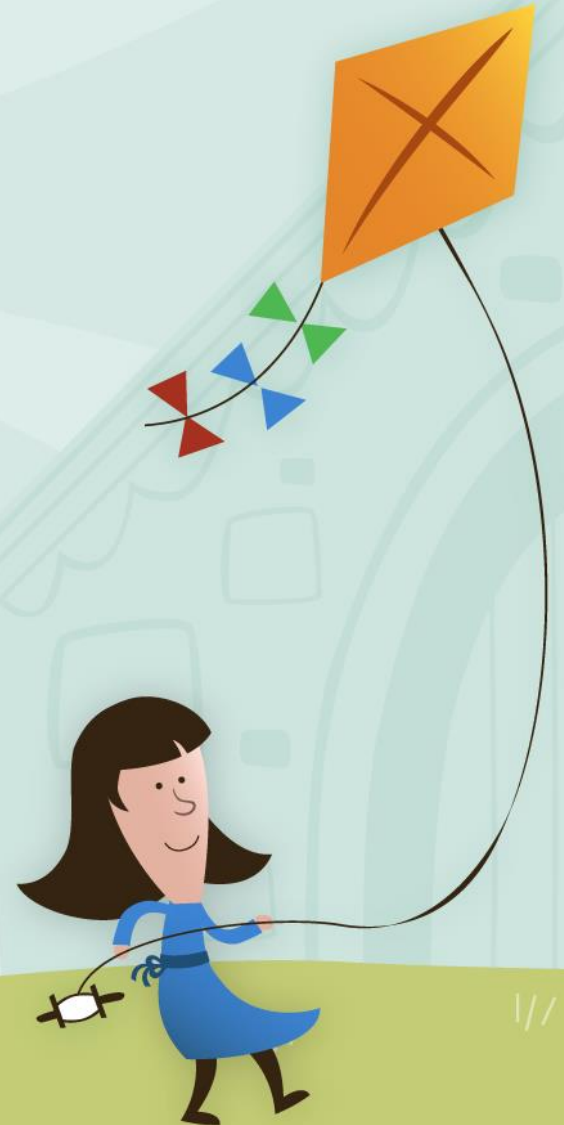




Nemingha Public School

Kindergarten 2021

Parent Orientation



Mission Statement



Nemingha Public School staff, students, parents and carers are partners who share the collective responsibility for student achievement in an exemplary learning environment. Our students are empowered in their journey to be successful, respectful, resilient, confident and creative individuals; and involved, informed citizens.





Going to Kindergarten is a unique experience in the life of any child, even a child who has been to day care or Pre-school. In the eyes of most children, Kindergarten is “big school” and entering school represents a giant step in their development.



A smooth transition to Big School

Getting a good start at school and feeling good about it is very important to your child, both now and in the future.



Before the First Day

Think ahead and plan
for the practical details
of your child starting school.



Talk about school in a positive way with your child.

Ensure your child has all the necessary requirements ie: uniform, bags, school shoes, joggers, hat, lunch boxes, drink bottle.

Label everything with your child's name.

Put a distinctive ribbon, tag or key ring on your child's bag.

Read through the “Parent Information Book” to familiarise yourself and your child with procedures and information about Nemingha PS.



Best Start Assessment

NSW Department of Education

Best Start Kindergarten Assessment

Parent and Carer Information

The Best Start Kindergarten Assessment helps teachers identify the literacy and numeracy skills of each student when they start Kindergarten.

Assessment

Your child will answer questions to assess their literacy and numeracy at the beginning of Kindergarten. There is no preparation required for the Best Start Kindergarten Assessment.

Feedback

You will be provided with feedback about how you can support your child during the first year of school.



Your child

We know that every child starts school with their own set of experiences, skills and abilities.

Understand and plan

The information gathered will help teachers to develop effective learning programs that build upon what each child knows and can do when they start Kindergarten.

Best possible start

The Best Start Kindergarten Assessment will ensure your child receives the best possible start to formal school education.



On the First Day

If you do enough preparation, your child's first day at school should go well.

To make the first day special, consider some of the following ideas:

- Encourage your child to go to bed early the night before.
- Prepare a nutritious breakfast for your child. Consider packing lunch the night before so you can minimise stress in the morning.
- Leave for school in plenty of time, and talk through any last minute concerns.



Red Folder

The **Red Folder** needs to be brought to school every day. It is used to hold notes and communication letters to and from home.

You need to check your child's **Red Folder** every day.



Lunch box and drink bottle

- Ensure all containers are clearly labelled with your child's name and class. Some people like to have fruit break, recess and lunch in separate containers.
- Nemingha P.S. supports low waste lunches – children are encouraged to be conscious of the negative impact land fill has on our environment so plastic and foil wrapping of food is discouraged.
- Crunch and Sip, Recess, Lunch and drinks should be brought to school in reusable containers.
- Do not pack too much food. Lunch should comprise of one sandwich/roll or wrap and a small piece of fruit.
- Left over food will be sent home so you are aware of what they have eaten for the day.
- Healthy food is encouraged, no lollies or chocolates and water is best!



On the Big Day

- On arrival at school reassure your child when and where you will collect them in the afternoon.
- See your child into their classroom, help them put their bag on the bag hook and find their teacher.
- When it's time to say goodbye, give your child a kiss and cuddle, tell them it is time for you to go. Then leave.



Communication

- Your child will have many concerns when starting school.
- Parents are role models for their child's attitude to school.
- Children copy their parents behaviour.
"If you are anxious, they'll be anxious."
- Listen to your child when they come home from school, ask specific questions about their day.
- Be Positive!

Anxiety is catching!



School Website



School Newsletter

The Newslink will be sent home with your child every Thursday.



Nemingha Public School
NEWSLINK
Community • Opportunity • Excellence

Term 4, Week 214 October 2021

Calendar
Subject to change with ongoing COVID restrictions

October
Friday 29 October Assembly
1/2M Item
no parents or visitors
Musica Viva performance
2pm online

November
Tuesday 2 November Kinder Orientation
9:30am-12 noon
Wednesday 10 Nov Kinder Orientation
9:30am-12 noon
Wednesday 10 Nov P&C General Meeting
7pm via Zoom
Friday 12 November School Photos
15-19 November Book Fair
'Old Worlds, New Worlds, Other Worlds'
Book fair and parade
Friday 19 November Kinder Orientation
Assembly
K/1H and K/1R Items
2:20pm in the school hall
Friday 26 November Colour Run
29-30 November Beach to Bush

December
Friday 3 December Presentation Day
Wednesday 8 Dec P&C General Meeting
7pm via Zoom
Thursday 9 December Year 6 Farewell
Thursday 16 December Nemingha's Got Talent
Last day of term for students
Friday 17 December Staff Development Day

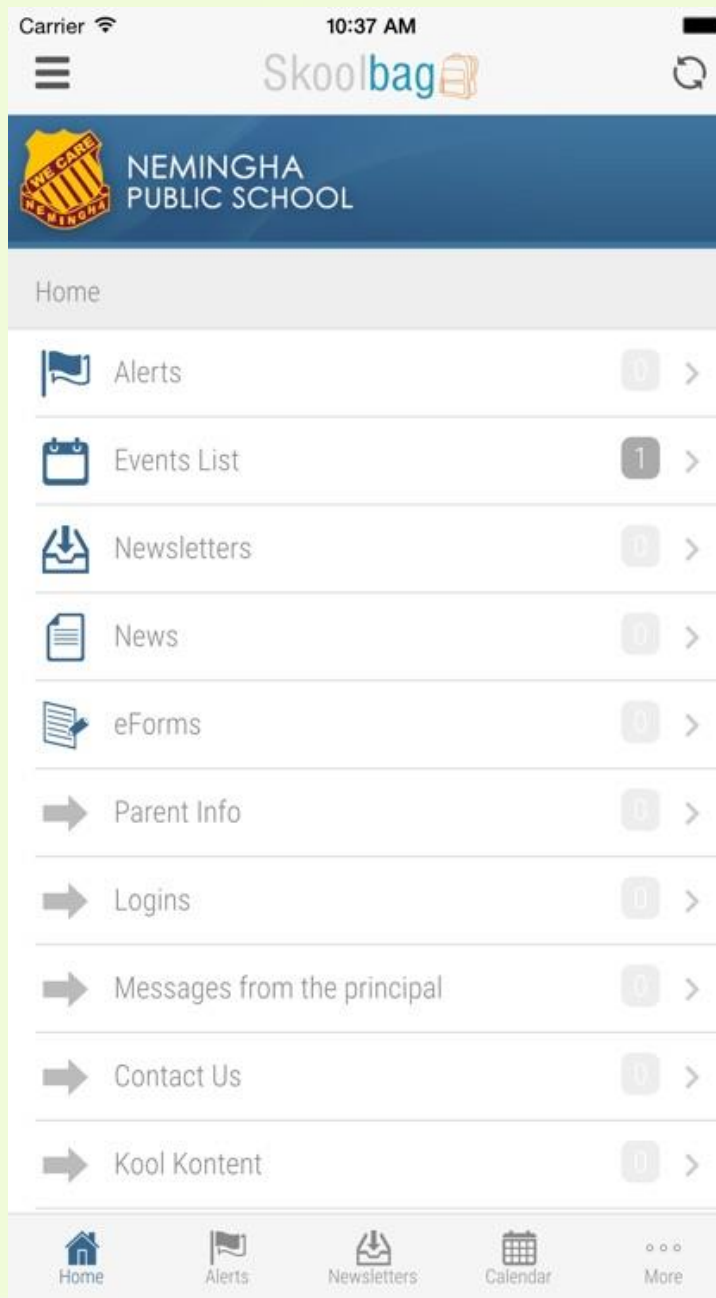
Clothing Pool - open each Monday, 2:30-3:30pm
and on the first Friday of each month, 2:30-3:30pm
BY APPOINTMENT ONLY

Exciting addition to the garden
Last week Stages 2 and 3 had a special visit from Wes Leedham and his team from the Warrumbungles Environmental Education Centre. They worked with us to build a new bank of three wicking garden beds. These new beds have replaced an older bed which had become infested by a nearby tree's roots. We learned all about the science of a wicking bed, sustainability in the garden and various animals in the garden. It was a fantastic day - the students thoroughly enjoyed themselves and did a marvellous job helping to build the beds. We can't wait to see our plants flourish in these new gardens!
Nadine Blanch





Skoolbag App



Get Involved

Developing a partnership with the school is one of the greatest ways *to enhance your child's learning and meet other parents.*

Volunteer for things like:

- School Canteen
- Reading Groups
- Excursions
- School P&C



Your child will find the transition to school easier if they know *you're involved and taking an interest in the school.*



Nemingha Parents & Citizens Association

- **Who can join?:** All parents, carers and community members are invited to join.
- **When are the meetings?:** Every second Wednesday of the month at 7:00pm.
- **Where do the meetings take place?:** Nemingha PS staffroom and via Zoom (videoconference)
- **How to become a financial member:** Membership is just \$2 and can be sent to school in a Ziplock bag with your child along with the membership form available in your enrolment pack or by emailing the P&C on neminghapandc@outlook.com



Our Message to You

The first day of school
Can be hard for Mum and Dad.
Part of you feels excited, The other part feels sad.
For many years you've held their hand,
And have been their loving guide.
Now you know the time has come
To leave them by our side.
But it is only for a little while,
As your child will learn and grow.
And at the end of everyday,
They will share with you all they know.
So as you walk away
Don't worry anymore.
We'll take care of your precious gifts
When you leave them at our door.

